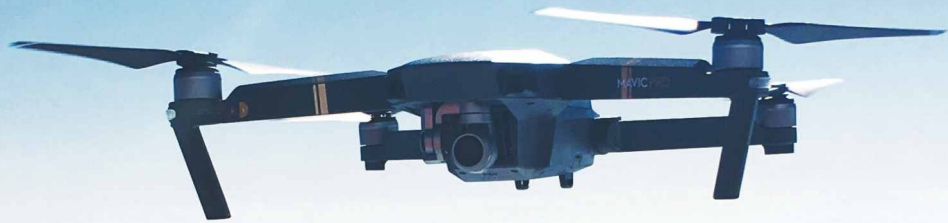


# LET'S REACH THE SKY



## RESCUE DRONE & ANTI DRONE ECOSYSTEM



[www.vivantaindustries.com](http://www.vivantaindustries.com)

**VIVANTA**  
INDUSTRIES LIMITED

# Services

## SURVEYS

DGPS Survey  
Total Station Surveys  
Aerial surveys  
UAV Survey  
360 Degree Panoramic Video  
Mapping  
LIDAR survey  
GPR survey  
Site Investigations  
Alignment Surveys

## MONITORING

Impact Evaluation  
Project Monitoring  
Agriculture Monitoring  
Infrastructure Monitoring  
Disaster Monitoring

## SOFTWARE

Web GIS  
Mobile GIS  
Enterprise GIS  
Dashboards  
GeoPortals  
GeoData Base

## MAPPING

Urban Mapping  
Utility Mapping  
Natural Resource Mapping  
Land Use Land Cover Mapping  
Soil Resource Mapping  
Ground Water Mapping  
Forestry Mapping  
Resource Inventory  
Environmental Impact Assessment  
Disaster Management

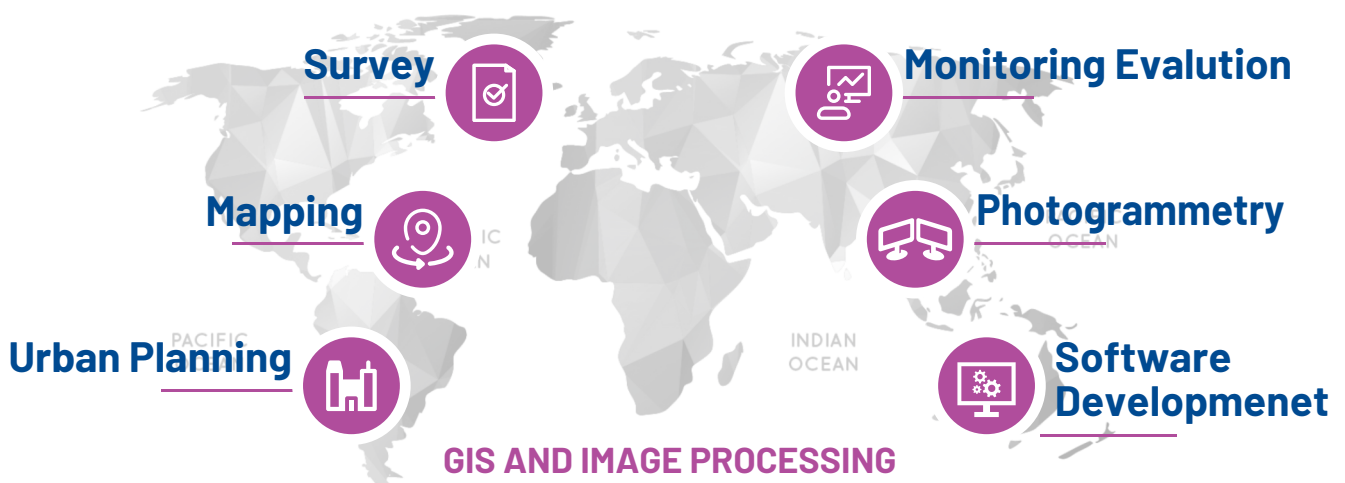
## PLANNING

Master Plan  
Development Plan  
Town Plan  
Municipal Mapping  
Property Tax Mapping

## GIS & IMAGE PROCESSING

Image Processing  
Photogrammetry  
UAV Data Processing  
Lidar Data Processing  
Mineral Exploration  
Utility GIS

## Specialised in



# Agricultural Drone

## **VG P100 Agricultural Drone**

*It's More Than a Larger Scale*



## **VG V40 Agricultural Drone**

*Agrifuture, Here and Now*



## **VG P40 Agricultural Drone**

*A Bigger Upgrade,  
An All-round Flagship*



## **VG Planet Agricultural Drone**

*The Ultimate Agricultural Drone*



## **V Series Plant Protection UAS**

*V Series Plant Protection  
UAS is a type of aerial spraying  
system designed for plant protection.*



## **V30 PLANT PROTECTION UAS**

*The Future Starts Today*



## **VG M500 Remote Sensing Drone**

*Seeing The Big Picture In Every Detail*



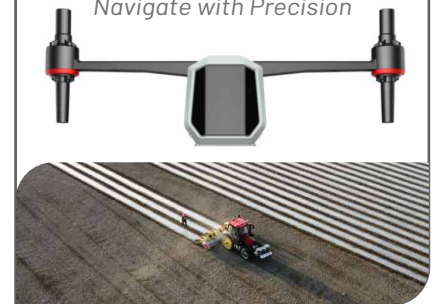
## **VG M2000 Remote Sensing Drone**

*A Vast Field Captured In a Blink*



## **AutoPilot Console**

*Navigate with Precision*



## **Unmanned Ground Vehicle**



## **VG 2022 Unmanned Ground Vehicle EV**

*Transform for Every Agricultural Mission*



## **VG 2020 Unmanned Ground Vehicle EV**

*A Customised Platform  
for Every Agricultural Mission*



# Lifesaver Water Rescue Robot V1

Water rescue robot is the standard rescue equipment applicable to government emergency and private aid groups, in scenes like sea, reservoir, river, lake and so on. It's also the equipment with a standard of marine, which meets the military's needs of systematic functions customization during specific rescue missions.



## Lifesaver Water Rescue Robot V1

Water rescue robot is the standard rescue equipment applicable to government emergency and private aid groups, in scenes like sea, reservoir, river, lake and so on. It's also the equipment with a standard of marine, which meets the military's needs of systematic functions customization during specific rescue missions.

Parameters	Size: 980mm*780mm*260mm	Weight: 15.1kg
	Towing weight: 500kg	Battery life: 50mins
	Buoyancy: 750N (equivalent to 4 swim rings)	Maximum range: 5km
	Maximum speed: 7m/s (without loading)/ 2m/s (80kg loaded)	Maximum remote control distance: 1500m

## Our Advantages

- **Rapid rescue:** Water Rescue Robot reaches people at risk on water at the speeds of 7 meters per second and save them immediately within the golden rescue time.
- **For the safety of rescuers :** Rescuers using Water Rescue Robot can realize either manual or remote operation. With remote controller, rescuers can control the Water Rescue Robot to go and save those drowning within 1500 meters, avoiding the risk and/or accident from work. It's also available for One-key Return, Original Route Return, Signal Losing Return and so on.
- **Bad weather. No problem:** Anti-turnover design, double propellers and strong buoyancy enable Water Rescue Robot to be applicable to bad weather and even flood prevention rescue work.
- **Safer experience:** Enclosed with safety grills, user doesn't need to worry about their hair getting tangled by propeller. And, its rubber head can also prevent collision from hurting passenger.
- **High-tech module equipped:** Over the Water Rescue Robot, user can definitely know what's happening to the robot whenever they want by just watching the LCD screen that shows Battery, Speed, Direction and so on. It's also got Human Detection Module that detects if user is away from 40 centimeters. It will stop for safety, if so, waiting for user to come back to the robot again.
- **Multiple payloads optional:** Payloads are optional for different purposes, such as speaker for talking to those at risk and nervous and for speaking while searching, GoPro camera for recording on-site, alarm for alerting, and swim rings and life-saving bag for saving more people.



# Water Rescue Robot V2

Water Rescue Robot V2 is a standard rescue equipment suitable for government emergency, private aid groups, and SAR organizations. It's applicable to swimming pool, reservoir, river, beach, and yachts and ferries rescue management. The water rescue robot V2 has remote control and manual operations, supports double-sided driving, supports 20-meter high-altitude throwing, and has a battery life of up to 60 minutes. The Water Rescue Robot V2 can be operated quickly in dangerous situations, it improves the efficiency of rescue while ensuring the safety of rescuers.



## Smart Emergency RC Lifebuoy Water Rescue Robot V2

Water Rescue Robot V2 is the standard rescue equipment suitable for government emergency, private aid groups, and SAR organizations. It's applicable to swimming pool, reservoir, river, beach, and yachts and ferries rescue management.

Parameters	Size	1020×800×200mm
	Weight	≤ 15kg
	Max Speed	≥ 8.8m/s(Without loading); ≥ 2.5m/s(80kg loaded)
	Battery Life	≥ 60min
	Throwing Distance	≥ 20m
	Buoyancy	≥ 300kg
	Waterproof	Ip68
	RC Range	≥ 1500m
	Control Methods	Remote/Manual Operations
	Driving Style	Double Sided Driving



## Features

- The robot is made of anti-corrosion and anti-ultraviolet HDPE material, which has high toughness, impact resistance and wear resistance; the robot head has a soft rubber for anti-collision;
- Support one-key return, signal losing return, original return, straight return, low battery return;
- Rescue robots can be thrown from a height of 20 m to the water surface.
- The remote controller adopts dual-hand operation design, which can display the power of the rescue robot and the power of the remote controller.
- With APP function, realize automatic route, pointing route, mode display, robot power, robot latitude and longitude, robot video, trajectory playback and custom home point and so on;
- Double sided driving, the robot can drive normally even if there's wind and wave to roll it over;
- V2 can cooperate with drone to realize air-sea rescue, automatically execute follow mode;
- Equipped with yellow flashing position indicator fog lights, it's visible in the dark.



# Smart Emergency Rescue Drone

Rescue Drone is composed of an aircraft, a payload, a remote controller and other accessories, which is easy for players to carry and operate. Besides, it takes less than 30 seconds to deploy the aircraft and start it up.



## Rescue Drone

Rescue Drone is fully armed with a range of advanced technologies including intelligent flight system, dual-redundancy sensing system, integrated TOF obstacle avoidance system and optical flow orientation system. Meanwhile, its stable and efficient flight is supported by intelligent batteries which can endure for 40 minutes. The smart quick-disassembling interface enables this product to load with various kind of functional payloads.

Parameters	Diagonal Wheelbase	852mm	Max.Operating Distance	7 km
	Weight Without Payloads	5.2kg	Max.Transmission Distance	7 km
	Max.Payload Capacity	2kg	Max.Wind-resistance	Level 6(12m/s)
	Max.Flight Time	40min	HoveringAccuracy	Horizontal±1m.Vertical±0.5m
	Max.Flight Speed	18m/s	Power Capacity	7000mAh X 2
	Max.Flight Altitude	3000m	Anti Fall	0.8 Meter Vertical Downward

- **Smart Industrial drone to be operated by everybody Easy** to operate/No training required
- **Industrial drone in backpack** Foldable/Light weight/Easy carry
- **Mobile follow-up** The drone can intelligently follow the moving remote controller held by an operator or certain objects.
- **Intelligent obstacle avoidance** The UAV equips with a front-view sensor, Which can detect obstacles in the range of 0.5-20 meters in front, and can effectively avoid collisions.
- **Optical Flow Positioning** For a low-altitude flight without GPS signal indoor, the drone can sense the ground texture through the optical flow module, achieve a precise hovering and stable flight.
- **Headless Mode** No matter what direction the drone's head and tail are in. It can identify the location of the remote controller automatically its direction will never be lost, easy control.
- **Good performance in wind & rain resistance** Industrial Level Quality Max. Wind Resistance : 12 m/s Ingress Protection:IP44



# Water Heating Stretcher

The water heating stretcher is a standard rescue equipment for government emergency as well as various water rescue organizations. It is used for water emergency rescue, helping unconscious people, emergency material transportation, and other scenarios. It is convenient for carrying people and emergency materials.

The water heating stretcher is a standard rescue equipment for government emergency as well as various water rescue organizations. It is used for water emergency rescue, helping unconscious people, emergency material transportation, and other scenarios.



When encountering danger, there is no need to inflate it, it can be directly unfolded to operate, reaching the incident place at a speed of 6 m/s and safely transferring the drowning person. It supports remote and local control mode, and the remote control displays real-time information such as battery level and distance. It supports heating function to maintain the rescued person's temperature in low-temperature environments. In addition, the stretcher is equipped with 2 straps and 9 handles, which can firmly fix the drowning person and avoid secondary injuries. Equipped with sound and light alarms, it is convenient for rescue operations in nighttime or rainy weather.

Parameters	Size: (1810*740*240)±5mm	Weight: 26kg
	Maximum weight of hauling: 400N	Position: GPS & BDS
	Battery capacity: 36AH/12S	Waterproof level: Ip68
	Maximum speed: 6m/s (without loading) 2.5m/s (75kg loaded)	Maximum remote control distance: 1500m

## Our Advantages

- **Product Material:** Made from HDPE to resist corrosion and UV.
- **Mode Switching:** Remote and local operations.
- **Foldable Body:** Folding and opening on the water or land within 20 seconds.
- **Rescue Facilities:** 2 horizontal straps and quick buckles, 9 handles and a head and neck fixing device.
- **Double Protection:** Adopts soft rubber for the head to absorb shock and injury; Built-in high-power dual propellers can prevent water grass, sand, and prevent entanglement of the human body with foreign objects.
- **Heating Function:**  $\geq 40^{\circ}\text{C}$  to prevent the rescued person from getting cold.
- **Sound and Light Alarm:** Supports rescue operations in nighttime or rainy weather.
- **Local Control:** Supports controlling the direction and speed by manual.
- **Multiple Return Modes:** Supports one-key return, signal losing return, original route return, straight-line return, low-battery return.
- The remote control supports automatic route, designated waypoint route, mode display, robot power display, robot latitude and longitude display, video display, route playback, and designated return point.



# Commercial Drone Services for Various Industrial Sectors.

Drone as a service

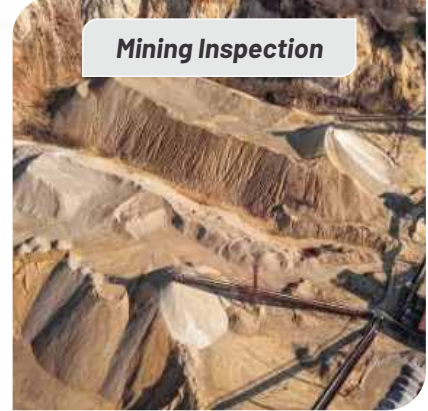
Industrial Inspection



Oil & Gas Inspection



Mining Inspection



Powerline Inspection



Pipeline Inspection



Wind Mill Inspection



Heavy Engineering



Defence & Space Optics



Defence Electronics



EMP Solutions



Niche Technologies



Rocket / Missile Programs



[www.vivantaindustries.com](http://www.vivantaindustries.com)

**VIVANTA**  
INDUSTRIES LIMITED



# Anti Drone System

## FEATURES

- Radio Frequency & GPS Jamming.
- Custom Power Configuration 20W-60W
- Frequency coverage of 2.4 GHz and 5.8 GHz.
- Operational Mode - Auto/Manual.
- VSWR & Over Temperature Protection.
- DDS Based Jammer Signal generator.
- Jamming Range - Omni (1.25km) & Directional (2km).



## Multispectral Drone

### FEATURES

- Multispectral sensors for a wide range of surveillance missions
- Long Range Capability to cover vast areas with ease
- Live Video Streaming for instant situational awareness
- Day & Night Capability for seamless operations
- Custom Payload Option to adapt to specific mission requirements
- Autonomous Flight Capability for efficient operations
- Portability & Ease of Operation for rapid deployments
- High Wind Resistance for stable flights



# DRONE BASED MAGNETOMETERS FOR GEOPHYSICAL SURVEYS

- Geological study for Mineral prospecting of severe terrain, harsh deserts, and inaccessible areas without disturbing are ecology and without human exposure.
- Directly reach the drilling targets by reducing 80% of drilling efforts.
- Fully autonomous flight with follow the terrain advantage.



**PRECISELY IDENTIFY AND DEMARCAT**  
GOLD, COPPER, LITHIUM, LEAD/ZINC, NICKEL,  
MAGANESE, IRONORE ETC.



**PRECISELY AND EASILY IDENTIFY**  
GOLD, COPPER, POTASH, LITHIUM, GRAPHITE,  
LEAD/ZINC, NICKEL, MAGANESE, COAL, IRONORE ETC.

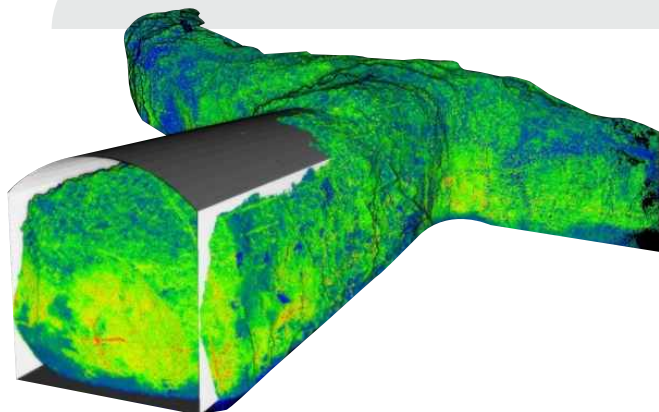
# DRONE BASED GPR-GEOPHYSICAL SOLUTIONS

- Mineral prospecting with high precision. in coal, bauxite, magnesium, gold, base metals, etc.
- Talling dams in mines (Strength & Leakage analysis)
- Cavity-land/underground monitoring
- Detection of underground tunnels, Structures, and pipe leakages.



# DIGITAL TRANSFORMATION IN MINING THROUGH AI & ML

- 3D REALITY MODELLING
- MINE PLANNING & DESIGN IN OPEN CAST MINES
- VALUMETRIC ANALYSIS OF LARGE STOCK PILES
- DRILL & BLAST OPTIMISATION USING AI & ML - AND HUGE COST SAVING
- SLOPE STABILITY ANALYSIS WITH AI & ML



AUTONOMOUS FLYING IN UNDERGROUND MINES AND TUNNELS

## DRONE-BASED LIDAR 3D MAPPING

- Mine Planning & Design in Underground.
- Ore dilution control & enhanced ore recovery.
- Monitoring Drilling & Blasting
- Over break & Under break monitoring.
- Access fall-of-ground
- Monitoring of Backfilling and mined-out stopes.
- Health & monitoring of Roof bolts/Ground support.



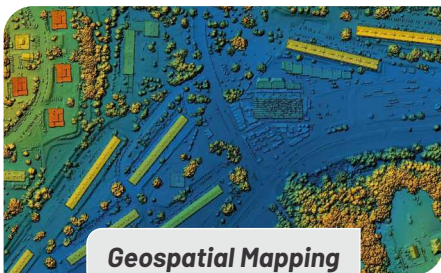


**FLY EVERYWHERE, SAFELY.**

## UAV is International Laboratory Accreditation Cooperation (ILAC) Certified to Military Standard 810G

Compact UAV with a monocoque carbon body and aerodynamic shape. Scalable base platform which is easy to customize.

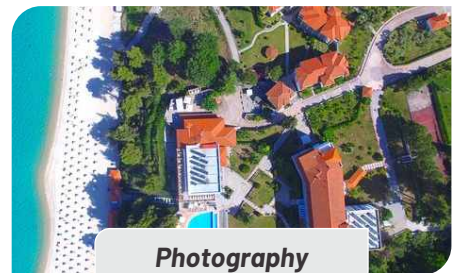
### Major Applications



**Geospatial Mapping**



**Asset Inspection**



**Photography**



**Surveillance**

<b>Technical Specifications</b>	Frame	Integrated Monocoque Design
	Max. Take-off Weight	6kg
	Payload Capacity	Uptill 1.kg
	Max. Operating Altitude	3500m AMSL
	Max Ceiling Altitude	1000m AGL
	Endurance with MTOW	60-80 Mins
	Max Speed	60 Km/h
	Range	Over 10 km in Radius
	Operating Temp Range	-10°C to + 55°C
	Dimensions	0.7mx0.6m
Landing Gears	Fixed /Retractable	



[www.vivantaindustries.com](http://www.vivantaindustries.com)

**VIVANTA**  
INDUSTRIES LIMITED

# Portable Counter UAV System

C-UAS System is a portable Plug & Play, easy to use system for the Detection, Tracking, Identification, and neutralization Military Grade Design having Shell protection level Ip67. Field proven Technology Readiness Level (TRL)9.

## RF DETECTOR

RF Detector is a fully passive (non emitting) solution, it senses the controller and the UAV even if the UAV hasn't taken off the ground. The internal database of UAVs is regularly updated.

## KEY FEATURE

- Coverage: +-90 in Elevation, 360 in Azimuth.
- UAV detection and identification of protocol used.
- Direction finding for WiFi frequencies with up to 5° RMS accuracy.
- Up-to 5,000 m detection range.
- Close to zero false alarms.
- For operator geolocation, three or more RF detectors are required

## Technical Specifications

DESCRIPTION	SPECIFICATIONS
Detection frequency bands	433 MHz(No DF), 915 MHz(No DF), 2.4 GHz ISM, 5.8 GHz ISM
Detection methodology	Passive detection of radio-frequency(RF)signals; zeroemission
Radio operating frequency range / Platform	Software defined radio(70MHz - 6GHz)
Direction Finding(DF)Accuracy	5° RMS
interface	Ethernet
Detaction Range	Up to5 km
Detection Time	5-10 seconds
IP Rating	>=Ip66
Working temperature	(-25+2)°C to(+55+2)°C
Power Consumption	35W
Power Supply	36 VDC(115 - 230 VAC power supply included)
Dimensions(diameter x hight)	318 mm x 294mm
Sensor(including antenna)weight	9.5 kg
Dynamic range	70 dB
Scanning frequency resolution	<100Hz
Minimum frequency bandwidth detectable	<100Hz
Supported wireless protocols	LightBridge, Ocusync; WIFI and WIFI variant protocols, Zigbee, bluetooth, NTSC/PAL, UAV-telemetry. Majority of DIY remote controllers and FPVs, etc.
Supported wireless modulations	OFDM, DSSS, FHSS, GFSK, OQPSK, Analog FM, 2FSK, BPSK, QPSK, 16QAM, 64QAM, etc.



# RF Jammer

RF Jamming system is an active soft-mitigation solution. It disrupts the communication link between the controller and the UAV and the navigation signals.

(GPS) which causes the UAV to go back home or land in its place (Depends on the failure procedure of the UAV's manufacturer).

Defensive capabilities can be triggered either manually or automatically.

Defense Configurations can be set up in the menu bar system settings.



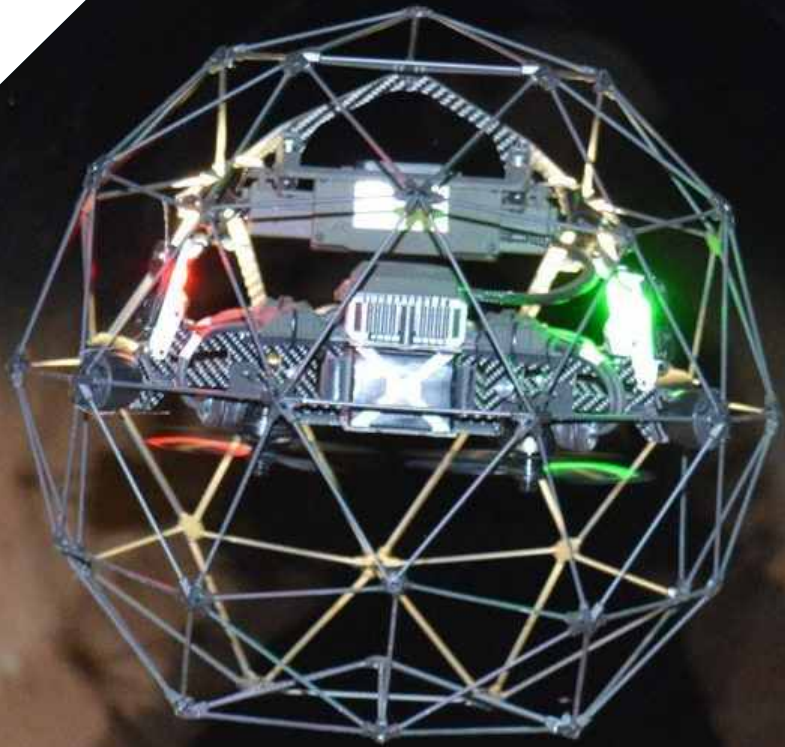
## KEY FEATURE

- Omni-directional Antennas
- Automatic/Manual Jamming operation Modes
- 24/7 Autonomous Defense Operations
- Rapid Mitigation(<5 seconds)
- Rapid Deployment
- Supports Consumer and Commercial ISM Frequencies

## Technical Specifications


	BASIC	STANDARD	PREMIUM
Frequencies	2.4 GHz - 100w 5.8 GHz - 80w 900 MHz - 20 w	2.4 GHz - 100 w 5.8 GHz - 80 w 900 MHz - 20 w	2.4 GHz - 100 w 5.8 GHz - 80 w 900 MHz - 20 w 400-433 MHz - 20 w
GNSS frequencies	1.5 GHz-20w	L1- 1.5 GHz 20 w L2- 1.2 GHz 20w	L1-1.5 GHz 20w L2- 1.2 GHz 20 w
Coverage	Elevation = -30° + 60°, and Azimuth = 360°		
Jamming Range	Up to 3km		
IP Rating	Ip66		
Operational Temperature	-20 to 65°C		
Power supply	100 - 240 VAC		
Dimensions	120x240x413 mm		
Power consumption	<750w		
Weight	11.5kg		





## VIVANTA

INDUSTRIES LIMITED

 403/TF, Sarthik-II, Opp. Rajpath Club,  
S. G. Highway, Bodakdev,  
Ahmedabad-380054, India.

 +91 79 26870952/53

 [marketing@vivantaindustries.com](mailto:marketing@vivantaindustries.com)



[www.vivantaindustries.com](http://www.vivantaindustries.com)

**Disclaimer:**

Please be advised that the use of images in this content is solely intended for reference purposes. We do not have any intention to infringe upon any copyright. If you are the rightful owner of any of the images used and believe that their use in this context constitutes copyright infringement, kindly contact us so that we can promptly address your concerns and take appropriate action.

**Note:**

1. Licensing Requirements: All Necessary Licenses to be Obtained by Relevant Stakeholders  
2. Originating from India: OEM & Private Label Services and Commercial business from 2024.